

Knowledge Organiser - Year Five -Sculpture

Key Vocabulary	
Form	Slip
Texture	Shape
Mark	Soft
Join	Cast

Focus Artist
Henry Moore



Crucial Knowledge	
Know that techniques of coiling, pinching and slabbing can be combined	Know that slip can join pieces together

- Overview**
- Plan and create a sculpture
 - Combine pinch, slab and coil technique
 - Begin to understand how to add finishing touches such as glaze, paint, polish

Glazed

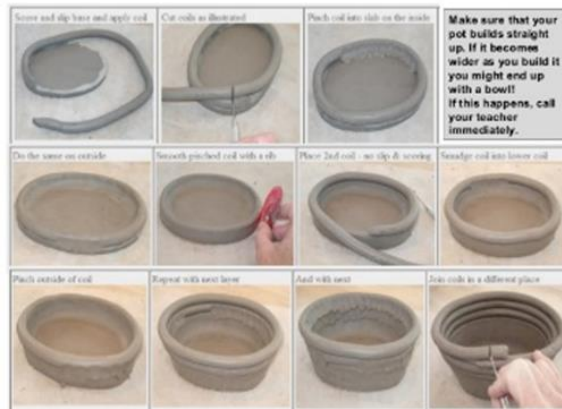
Painted

Polished



Knowledge Organiser - Year Five -Sculpture

Vocabulary	Definition
Glaze	A very thin, transparent coloured paint applied over a previously painted surface to alter the appearance and colour of the surface.
Form	A three- dimensional figure
Slip	This is liquid clay ... clay with a lot of water added to it. It is used as a sort of glue to hold pieces together. Clay shrinks as it dries so the clay pieces are need to be firmly fastened.
Cast	A mould filled with a liquid material



Can you create
your own piece of
pottery using the
techniques
taught?